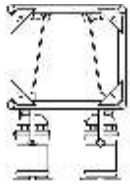
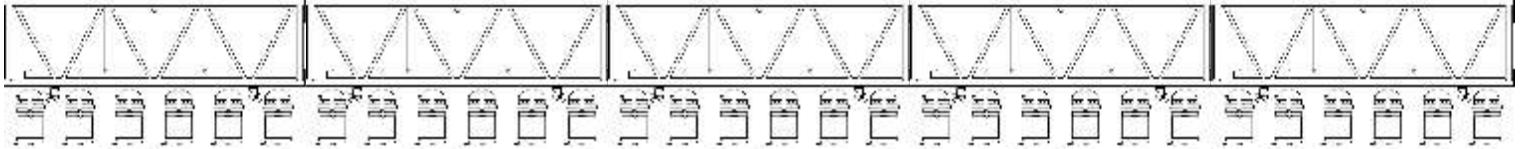


TOLAR A.V.L.

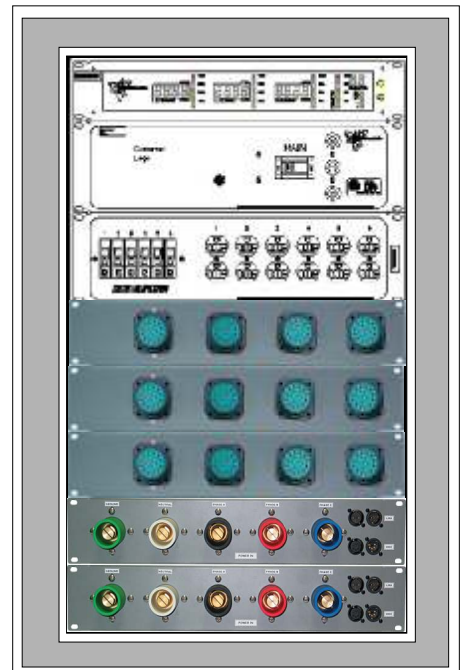
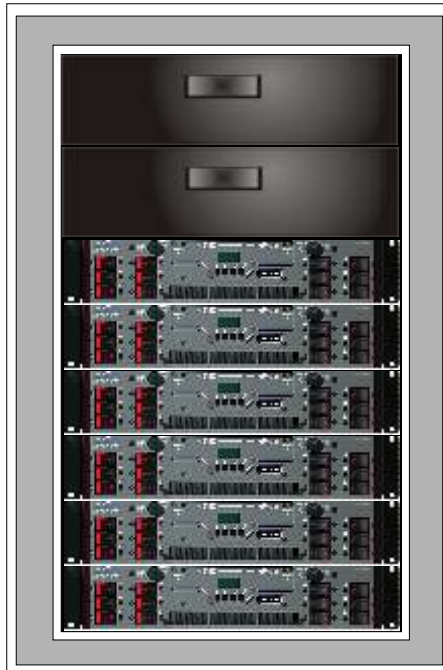
Concert Lighting System 1

TRUSS #1

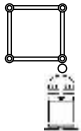
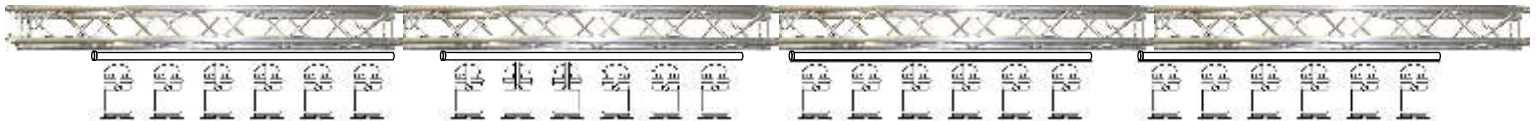


SIDE VIEW

- 40 Feet of James Thomas pre-rigged double hung truss
- 60 PAR64 chrome fixtures
- 2 Genie ST25 lift towers or 2 one-ton chain motors
- 72 Lightronics dimmer channels @ 1200 Watts each
- 400A three-phase Cam Lock pass through
- 6 Edison duplexes on six 20A circuits



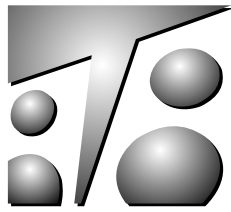
TRUSS #2



SIDE VIEW

- 40 feet of 12 inch Global Truss
- 24 PAR64 chrome fixtures
- 24 Eurolight dimmer channels @ 1200 Watts each
- 200A single-phase Cam Lock input
- 4 Edison duplexes on four 20A Circuits





TOLAR A.V.L.

Concert Lighting System 1

CONTROL

AVOLITES PEARL 2048 Lighting Desk

4 complete DMX 512 universes

240 Dimming Channels

Up to 120 Intelligent Fixtures



AVAILABLE ADDITIONS

Floor Specials- using the 12 extra dimmers in the Truss #1 Dimmer Rack we can add up to 16 ETC Source -Four Pars. These work great in groups of 2-4 up lights each



Truss Specials- Up to a 8 ETC Source-Four Lekos can be substituted for PAR64s on either truss and used as individual specials for stage performers.



Hazer- This Real FX DM50 is the industry standard. For indoor venues it only uses a tablespoon of fluid an hour and smoke can linger for up to 3 hours.



Spotlights- Up to 2 long throw follow spots can be provided with stands and spotlight operators. Client must provide a riser for each.



Clear-com- Our communication system is the latest system by Clearcom with 1 two-channel base station and 4 sets of Body Packs with double muff headsets.

