

TOLAR A.V.L.

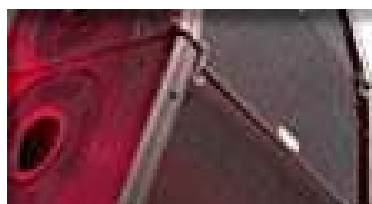
Concert System 1

FOH SPEAKERS

Our A-System is currently an EAW KF730 Compact Line Array System with 8 Line Array elements per side flown off of genie towers or chain motors. The system features an equal number of SB1000 subwoofers. Additional subwoofers are available on demand. We are extremely impressed with this rig. Each cabinet features (2) 10 inch midrange, (2) 7 inch high mids and (2) 1 inch compression drivers. The subs are loaded with (2) 18 inch drivers in a clam shell configuration. The full system is a total of 120 individual driver elements and it is shockingly loud for such a compact and attractive rig. But even more impressive is the pristine fidelity and custom tunable coverage.

We use a digital laser range finder and the EAW Line array calculator on our laptop computer to setup the dimensions and slope of each section of the venue from floor length and slope, length and slope of the rake, balcony, even location of mix position and the distance to the first row of seating are taken into account to calculate cabinet splay settings and array frame positions that will perfectly service the venue and we have to say: "Its right on the money". This system is smooth, pristine and very powerful at a staggering 62,000 watts.

EAW KF730
Line Array System



TOLAR A.V.L.

Concert System 1

FOH CONSOLE

Soundcraft Mh3- 48 mono + 4 stereo channels



- ▶ 8 Subgroups
- ▶ 10 VCAs
- ▶ 12 Auxiliary Sends
- ▶ 4 Band Fully Parametric EQ w/ Q
- ▶ Extensive Scene Muting w/ Recall
- ▶ Extensive Talkback Features
- ▶ Direct Out On Each Channel
- ▶ 12x4 Matrix Section

FOH PROCESSING

Our A-system processing rack is designed to satisfy the needs of even the most demanding artist. It contains the following processing:

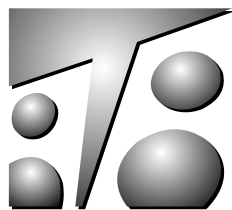
- ▶ Stereo 31 Band BSS Graphic FOH EQ.
- ▶ BSS Omnidrive Compact System Controller
- ▶ Yamaha SPX990
- ▶ Yamaha SPX 90II
- ▶ Yamaha REV500
- ▶ TC Electronics D-Two Delay
- ▶ 8 Channels of DBX 266 Compressor/Gate
- ▶ 8 Channels of Presonus ACP88 Compressor/Gate
- ▶ Tascam CDA700 CD/Tape Deck
- ▶ Dual Console Power Supplies

Additional Units Available- all inserts are discrete TRS balanced send and return.



SNAKE SYSTEM

Whirlwind- 48x8 Stage Box- with direct MPC output, ISO monitor split MPC output, 12 channel sub snake MPC output duplicating 1st 12 channels. **200 Foot FOH Snake-** plugs directly into FOH console with **Extra fan attachment for support act.** **50 Foot Drum Sub-snake, (2) 8 channel sub-snakes** with fans. **35 Foot Monitor Console Snake with Fan.**



TOLAR A.V.L.

Concert System 1

MONITOR Console & Processing

48 Ch. Yamaha M7CL Monitor Console

48 channels
On Board
Comp/Gates/FX/EQ
14 Mix Sends
Digital Scene Memory



MONITOR Wedges

We have up to (12) EAW sm222 floor wedges available. Each wedge is bi-amped with a (2) 12 inch x (1) 2 inch configuration. Long throw 31 band graphics, DBX active crossovers and QSC Power Lite amplifiers make up the drive system. Side fills and drum fills are a (2) 15 inch x (1) 2 inch configuration.

